

## Features

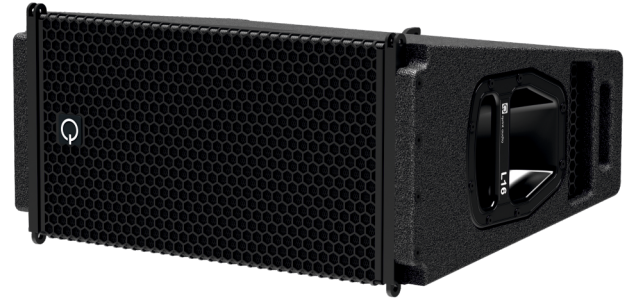
- 2x 8" bass reflex design combined with 4"/2.5" coaxial compression driver
- Extended low frequency response at reduced power
- Integrated rigging system for use with L-series modules
- 2x NLT4 2x NL8 on the rear
- 4x ergonomic handles, 2x on the rear, 1x on the left, 1x on the right
- Truck size cabinet for efficient transportation
- All Quint Audio loudspeakers are designed for use in combination with Quint Audio processors & amplifiers
- All Quint Audio loudspeaker presets are matched in level and phase at the crossover frequency for easy mix & match
- Factory system presets available

## Applications

- Line Source

## Construction

- Birch plywood enclosure
- Durable hybrid coating, resistant to wear, impact, and weathering
- Klotz internal wiring
- Neutrik speakON® connectors
- Powder coated steel grille with acoustically transparent fabric on the back



Model	L16
Filter	2-channel DSP control
Loudspeaker components	2x8"/4"/2.5"
Impedance	5 Ohm
Peak SPL* / Freq. range (-6db)	142dB/100Hz-20kHz
Max SPL* / Freq. range (-6db)	122dB/100Hz-20kHz
Max SPL -10db / Freq. range (-6db)	112dB/93Hz-20kHz
Max SPL -20db / Freq. range (-6db)	102dB/50Hz-20kHz
Dispersion (HxV)	110°x12°
Connections	2x 8-pole speakON 2x 4-pole speakON
Weight	27kg
Size (WxHxD)	580 x 270 x 450mm

\* Measurements are conform to AES75 and carried out with P9 processor and A42 amplifier. Values are scaled to 1m free field.

## Accessories

